



Ankersmid Sampling



Stationary Gas Sample Probes Series ASP

The gas sample probes series ASP are designed for continuous gas sampling in difficult processes with gases of high and low dust content, different temperatures and extreme humidity. Due to various acid dew-points the probe can be heated up to max. 320°C (f. e. DeNOx-applications).

A wide range of filter elements and process top-filters are available to customize the sample probe to each application.

Various features like test gas, back-purge and shut-off valves, timer relays, adaptor flanges, integrated NOx-converter or oxygen sensor are available.

Applications:

Stack and environmental measurement

Continuous Emission Monitoring (CEM)

Chemical and Petro-chemical processes

Steel plants

Incinerators

Oil and Gas refineries

and many more...

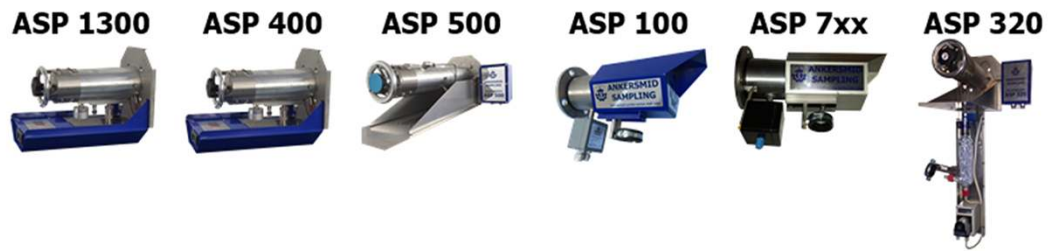
“Innovative and unique features are our standard”

Reference customers:

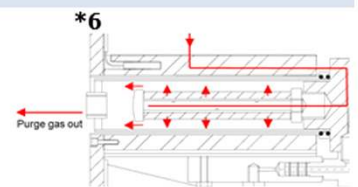
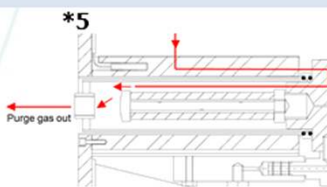
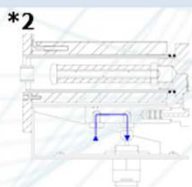
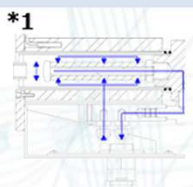




Ankersmid Sampling



	ASP 1300	ASP 400	ASP 500	ASP 100	ASP 7xx	ASP 320
Heating	Electrical	Electrical	Electrical	Electrical	Steam-driven	Electrical
Self-limiting with fixed operating temperature	✗	✗	✗	✓	✗	✗
Adjustable for variable operating temperature 	✓	✓	✓	✗	✗	✓
Operating temperature	0-200°C (max. 320°C)	0-200°C (max. 320°C)	0-200°C (max. 320°C)	180°C	0-200°C (max. 350°C)	0-320°C
Test/calibration gas						
Via probe filter element acc. to EN14181 *1	✓	✓	✓	✓	✓	✓
Via probe sledge for pure calibration *2	✓	✓	✓	✗	✗	✓
Options						
Retractable system to exchange sample tube/top-filter without demounting the probe *3	✓	✓	✓	✗	✗	✓
Pneumatic isolation valve to shut-off the sample outlet from the process *4	✓	✓	✓	✗	✗	✗
Probe filter						
2µm, OD: 30mm/L: 150mm Material: ceramics	✓	✗	✗	✓	✓	✓
5µm, OD: 40mm/L: 180mm Material: sintered steel	✗	✓	✗	✗	✗	✗
5µm, OD: 40mm/L: 500mm Material: sintered steel	✗	✗	✓	✗	✗	✗
Process dust loading (without top-filter and back-flush options)	0-2g/m ³	2-10g/m ³	>10g/m ³	0-2g/m ³	0-2g/m ³	0-2/m ³
Top-filter						
ATF 180, 5µm, OD: 40mm, L: 180mm 	✓	✗	✗	✗	✗	✓
Process dust loading	2-10g/m ³					2-10/m ³
ATF 050, 5µm, OD: 40mm, L: 500mm 	✓	✗	✗	✗	✗	✓
Process dust loading	>10g/m ³					>10/m ³
Back-flushing						
Sample tube/top-filter (bypassing the probe filter element) *5	✓	✓	✓	✓	✓	✓
Probe filter element and sample tube/top-filter *6	✓	✓	✓	✗	✗	✓



Gas Sample Probe Series ASP



ASP 613



ASP 620



ASP 630



Heating	Electrical	Electrical	Electrical	Electrical	Electrical	Electrical
Self-limiting with fixed operating temperature	✗	✗	✓	✗	✗	✓
Adjustable for variable operating temperature	✓	✓	✗	✓	✓	✗
Operating temperature	0-180°C	0-180°C	150°C	0-180°C	0-180°C	180°C
Sampling from Ex-zone	0 / 1 / 2	0 / 1 / 2	1 / 2	2	2	1 / 2
Mounting in Ex-zone	1 / 2 / 21 / 22	1 / 2 / 21 / 22	1 / 2	2	2	1 / 2
Controller/limiter unit mounted to Sample probe (in hazardous area)	✓	✗	✗	✓	✗	✗
Controller/limiter unit mounted by customer (in non-hazardous area)	✗	✓	✗	✗	✓	✗
ATEX-declaration	II 2G EEx d E i b IIC T3	II 2G EEx d E i b IIC T3	II 2G/D T3	II 3G, Ex nR IIB T3 (for heater)	II 3G, Ex nR IIB T3 (for heater)	II 2G Ex d IIC T3 II 2D IP66
Test/calibration gas options						
Via probe filter element acc. to EN14181	✓	✓	✓	✓	✓	✓
Via probe sledge for pure calibration	✓	✓	✗	✓	✓	✗
Options						
Retractable system to exchange sample tube/top-filter without demounting the probe	✓	✓	✗	✓	✓	✗
Pneumatic isolation valve to shut-off the sample outlet from the process	✓	✓	✗	✓	✓	✗
Probe filter						
2µm, OD: 30mm/length: 150mm Material: ceramics	✓	✓	✓	✓	✓	✓
Process dust loading (without top-filter and back-flush options)	0-2g/m³	0-2g/m³	0-2g/m³	0-2g/m³	0-2g/m³	0-2g/m³
Top-filter						
ATF 18x, filter porosity: 5µm (OD: 40mm, length: 180mm)	✓	✓	✗	✓	✓	✗
Process dust loading	2-10g/m³	2-10g/m³		2-10g/m³	2-10g/m³	
ATF 05x, filter porosity: 5µm (OD: 40mm, length: 500mm)	✓	✓	✗	✓	✓	✗
Process dust loading	>10g/m³	>10g/m³		>10g/m³	>10g/m³	
Back-flushing						
Sample tube/top-filter (bypassing the probe filter element)	✓	✓	✓	✓	✓	✓
Probe filter element and sample tube/top-filter	✓	✓	✗	✓	✓	✗



Sample Tubes Series AST

Unheated sample tubes

Sample tubes series AST are used in combination with Ankersmid sample probes to extract sample gas in the optimal section of the gas-stream. For an optimal measurement of a representative sample a position in the middle third of the gas stream is advised.

Process temperature	Material	Type
0 - 160°C	PTFE	AST 41X
0 - 440°C	Titanium	AST 42X
0 - 600°C	Stainless steel	AST 40X
0 - 960°C	Hastelloy C®	AST 431/2/3/4
0 - 1400°C	Kanthal®	AST 435/7/8
0 - 1600°C	Saphalloy®	AST 436

Demister tubes for wet processes

For gas sampling downstream a wet scrubber with high water content the tube type ADT, equipped with an integrated demister for liquid drop collection and rejection to the process, is available.



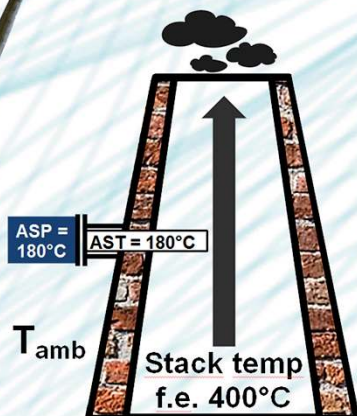
0 - 95°C	PVDF	ADT
----------	------	-----

Heated sample tubes for operating temperatures

Electrically heated sample tubes series AST are used in extractive sampling systems to avoid dew-point problems and condensation in the insitu tube during transfer from the sample point to the heated sample probe. Heated sample tubes avoid cold spots and thermal bridges due to thick stack walls.



0 - 600°C	Stainless steel	AST 050 - 200
-----------	-----------------	---------------



Top-Filters Series ATF

Top-filter for high-dust loaded processes

The Ankersmid top-filters are used together with gas sample probes series ASP for continuous gas sampling in processes with increased dust loading. These extra stainless filters can be mounted on top of the sample tubes in case of very high dust levels ($> 10g/m^3$).

Process temperature	Material	Type
0 - 600°C	Sintered steel	ATF 180/050



Ankersmid Sampling BVBA

Neerlandweg 21
B-2610 Wilrijk
BELGIUM

www.ankersmidsampling.com

Distributor:

